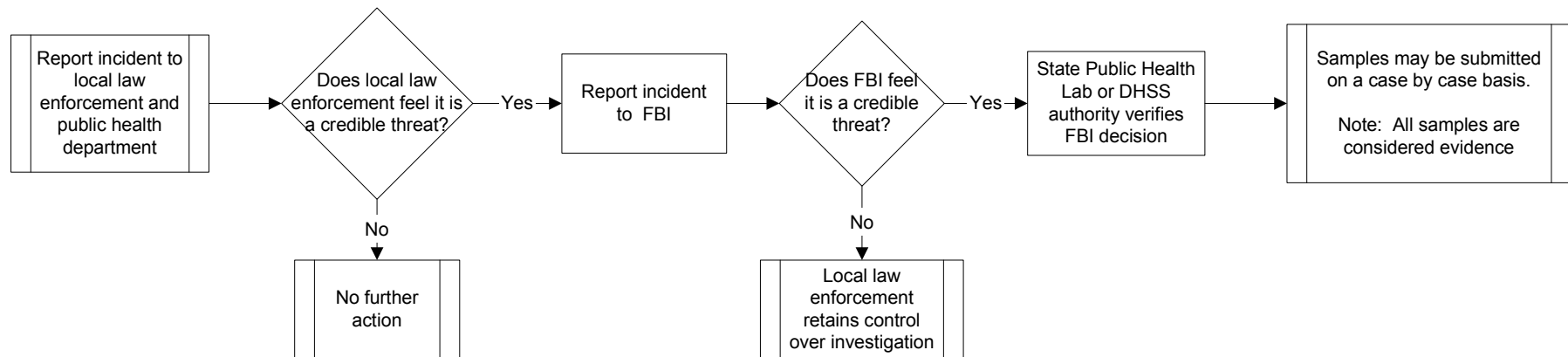


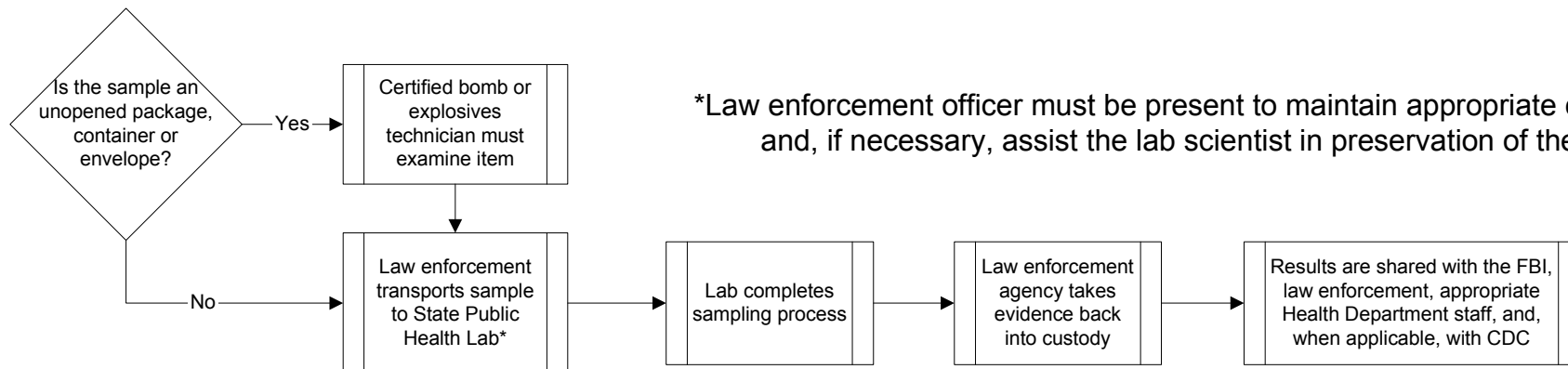
# Protocol For Submission of Laboratory Samples Implicated in Bioterrorism Events

## How to Determine If a Specimen May Be Submitted For Testing



## How to Submit a Specimen For Testing: Missouri Protocol

Procedures may vary from state to state; protocol should be verified with your state public health laboratory



\*Law enforcement officer must be present to maintain appropriate chain of custody and, if necessary, assist the lab scientist in preservation of the evidence.

Created by the Institute for Bio-Security at Saint Louis University, School of Public Health

Original source: Missouri Department of Health and Senior Services Health Alert October 17, 2001. Updated 10/5/05.

More information about bioterrorism may be obtained at: <http://www.bioterrorism.slu.edu>